

The slide is a webinar title slide. On the left, it features the Indiana CORE Assessments logo (a stylized star) and the text "Indiana CORE Assessments for educator licensure". Below this is the main title "Preparation Strategies for the Indiana CORE Assessments for Educator Licensure" in a large, bold, blue font. Under the title is "Spring 2017" and the Pearson logo. On the right, there is a vertical sidebar with a polka-dot background. It contains a blue box with a checkmark icon and the text "Please call in to: (877) 554-0877" and "Conference Code: 132 028 8053". Below this is a white box with the heading "Please remember..." and two icons: a microphone with a slash (labeled "Mute your line to reduce background noise") and a speech bubble (labeled "Chat with us during the session to ask questions"). At the bottom of the sidebar, it says "After the webinar you may send your questions to Evaluation Systems, and we will respond to you directly. es-cvsurvey@pearson.com".

Indiana
CORE
Assessments
for educator licensure

Preparation Strategies for the Indiana CORE Assessments for Educator Licensure


Spring 2017


Pearson

Please call in to:
(877) 554-0877

Conference Code:
132 028 8053

Please remember...

 Mute your line to reduce background noise

 Chat with us during the session to ask questions

After the webinar you may send your questions to Evaluation Systems, and we will respond to you directly.
es-cvsurvey@pearson.com

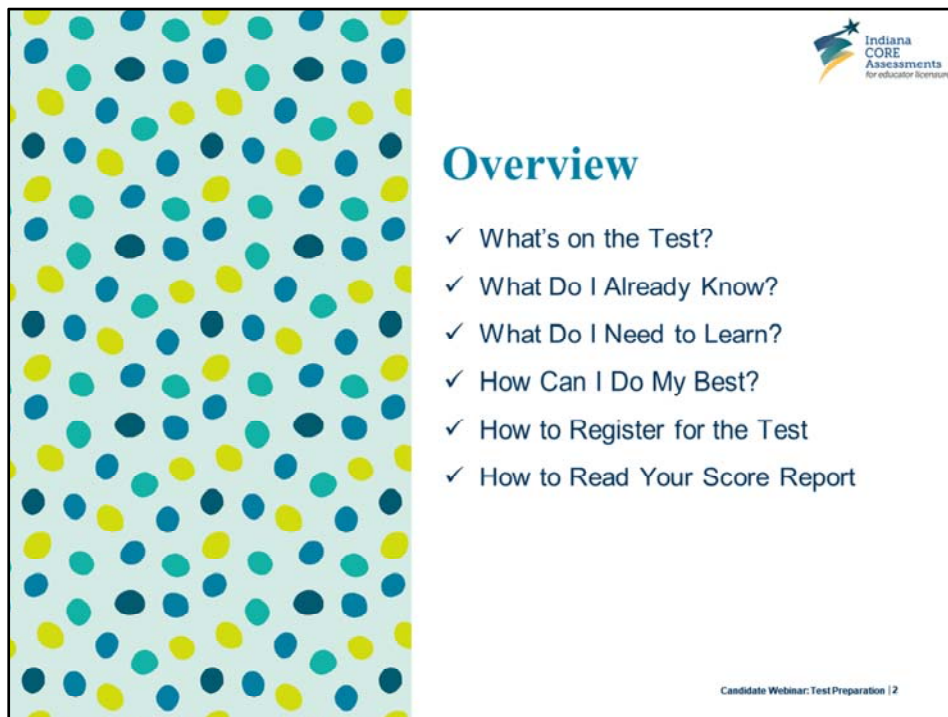
Good day, everyone. On behalf of the Indiana Department of Education (IDOE) and the Evaluation Systems group of Pearson, we would like to welcome you to the webinar **“Preparation Strategies for the Indiana CORE Assessments for Educator Licensure.”**

We’re glad you could join us and hope you find the information we have to share valuable to you as you begin to focus your preparation for the test.

Before we get started, we will be muting the microphones/lines to reduce background noise.

If you have a question, please use the Chat function. As we have time, we will pause and share the questions and answers helpful for the group. If you prefer that we contact you directly regarding your question following the session, please provide your email address in your Chat and we will reach out to you directly.

We will get started shortly.



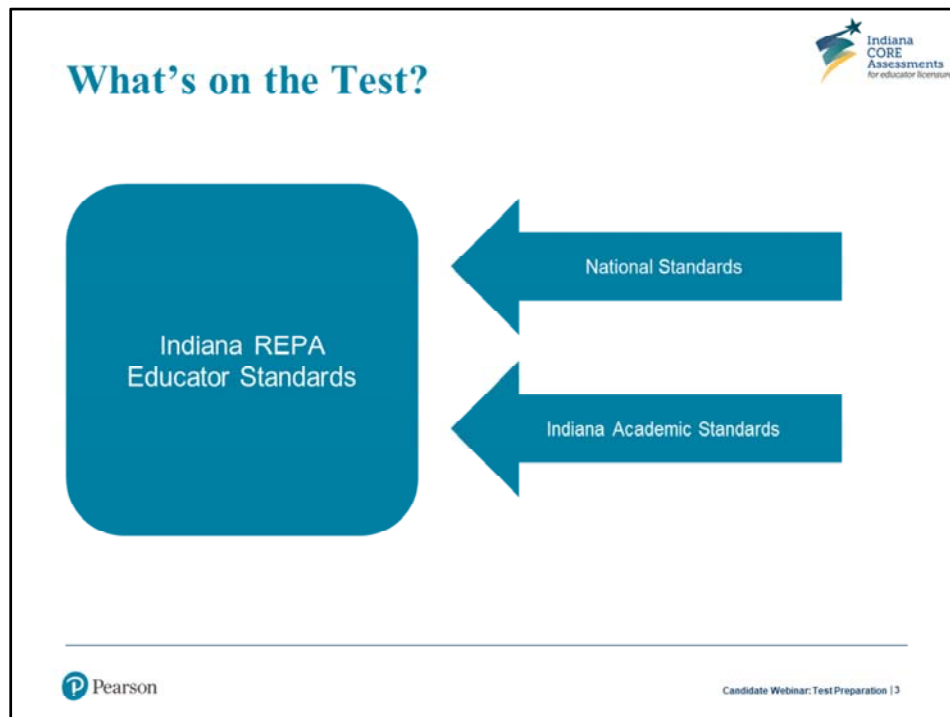
Today we'll be focusing on some strategies you can use to prepare for your Indiana test.

We'll begin by talking about where the test content comes from.

We'll also discuss what resources are available to you on the Indiana CORE Assessments for Educator Licensure website and how you might make the best use of those resources to help you as you prepare to take the test.

After we've covered preparation activities, we'll briefly walk you through the process of creating an account, registering for the test, and finding available seating at a test center. We'll also show you where to find information on the website about what to expect at the test center on the day of the test.

Finally, we'll review how to read a score report, and how to review the detailed performance information on your score report and reference information on the website in the event you should need to retake a test.



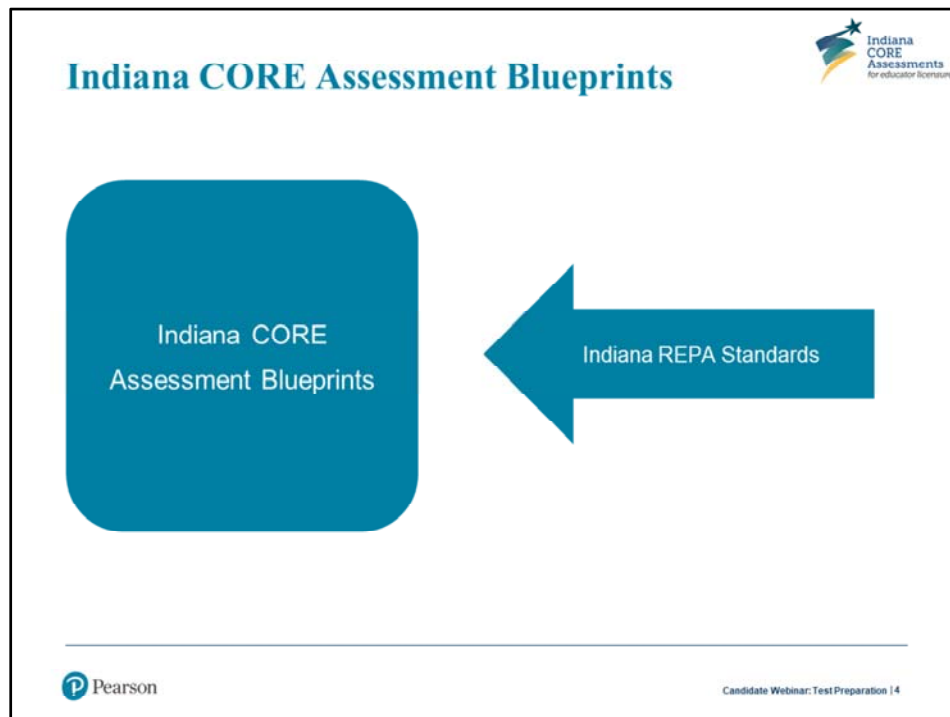
First, let's discuss the development and the purpose of the Indiana CORE Assessments for Educator Licensure.

The Indiana CORE Assessments for Educator Licensure were developed to assess the basic skills competency required for entry into Indiana educator preparation programs and developmental (pedagogy) as well as content area knowledge and skills required for effective teaching in Indiana schools.

The tests included in the Indiana CORE Assessments for Educator Licensure program are based on and fully aligned with Indiana Rules for Educator Preparation and Accountability (REPA) Educator Standards.

The Indiana REPA Educator Standards are:

- Grounded in scientifically based research
- Aligned with Indiana Academic Standards and national educational standards



The Indiana REPA Educator Standards form the basis of each assessment blueprint. The content of the assessments is therefore directly aligned with and based on the Indiana REPA Educator Standards.

An assessment blueprint is divided into content domains. A content domain contains one or more objectives, each corresponding to one or more of the Indiana REPA Educator Standards for that field. Each objective is further defined by a set of essential elements of knowledge that together articulate the knowledge and skills measured by the test questions associated with that objective.

Test items were developed to assess the content defined by the assessment blueprints. Content specialists, item development specialists, content and bias reviewers, and psychometricians were involved in developing test items for the Indiana CORE Assessments for Educator Licensure program.

What's on the Test?



Test Development Process (Involving Indiana Educators)

- ✓ Prepare Assessment Blueprints
- ✓ Develop Test Materials
- ✓ Review of Test Materials by Indiana Educators and Faculty
 - Item Review
 - Marker Response Selection
- ✓ Pilot Test Items
- ✓ Standard Setting



Candidate Webinar: Test Preparation | 5

Indiana teachers and teacher educators participated in the review and validation of draft test items for the program. An Indiana Bias Review Committee (BRC) reviewed test items for potential bias and inclusion of diversity. Indiana Content Advisory Committees (CAC) reviewed and revised items, if needed, to ensure that the test items are accurate, appropriate, free from bias, and job-related. Test items were validated by committees of Indiana teachers and teacher educators.

Reviewed and validated test items were then pilot tested to determine if they had acceptable statistical and qualitative characteristics to include on operational test forms.

And finally, panels of Indiana teachers and teacher educators met and provided standard-setting recommendations for each test. The recommendations made by each panel were provided to the Indiana State Board of Education (SBOE). The SBOE established the passing score for each test.

Where to begin?
Key Questions to ask when preparing to do your best



What's on the test?
What do I already know?
What do I need to learn?
How can I do my best?

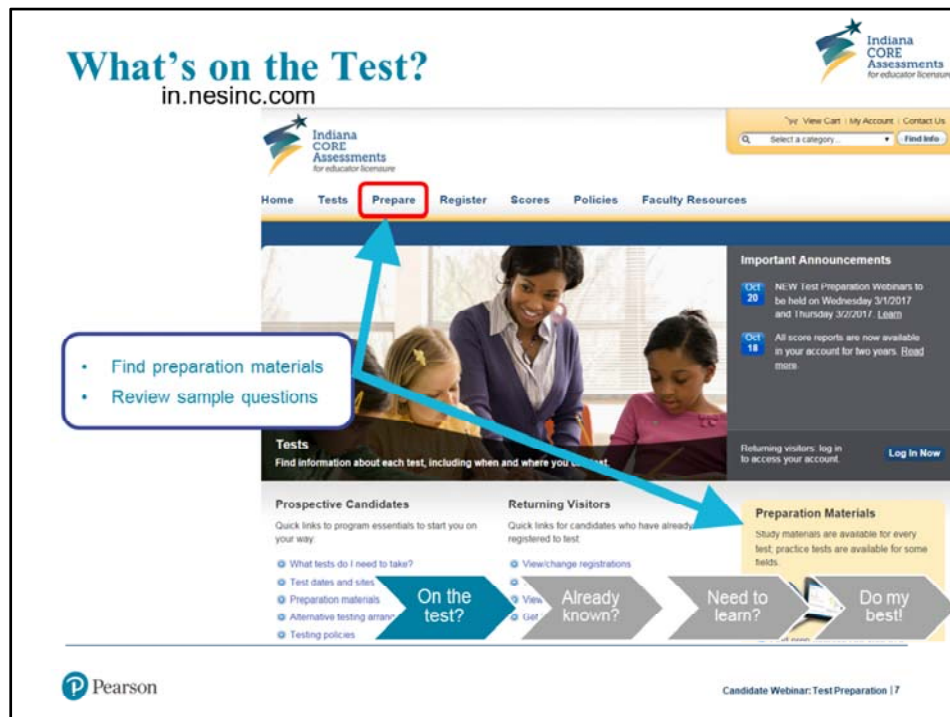


in.nesinc.com

 Pearson

Candidate Webinar: Test Preparation | 6

Now that we've reviewed the purpose of the tests and how they were developed, let's see how we might optimally use the resources on the Indiana CORE Assessments website to answer some key questions in preparing to take the test.



To access preparation materials, you will begin on the Indiana CORE Assessments for Educator Licensure program website at www.in.nesinc.com. Select either the “Prepare” tab at the top of the page, or the text in the lower right square labeled “Preparation Materials.”

What's on the Test?
Preparation Materials

Indiana CORE Assessments for educator licensure

Home Tests **Prepare** Register Scores Policies Faculty Resources

Home / Tests / Elementary Education / Preparation Materials

Preparation Materials
(005) Elementary Education

Test Content: Assessment blueprint

Study Guide:

1. Program and test information
2. What's on the test? Test design and assessment blueprint

Mapping Assessment Content to Courses: Worksheet instructions, PDF worksheet, Microsoft Word worksheet

Taken Worksheet: Microsoft Word worksheet

Videos and Tutorials: How to Prepare for Your Teacher Licensure Test, Pearson Professional Centers Tour, Computer-Based Testing Tutorials

Fee-Based Interactive Materials:

Practice Test: \$29.99. Includes 120-day access to practice test and review of results, beginning on date of activation. [Buy Now](#)

On the test? Already known? Need to learn? Do my best!

Pearson

Candidate Webinar: Test Preparation | 8

When you click on the “Prepare” tab and select your test, you’ll be taken to the preparation materials menu for that test.

From there, we’ll select “What’s on the test? Test design and assessment blueprint.”

What's on the Test?

Preparation Materials

- Contents
- Test Design
- Assessment Blueprint
- State Standards
- Indiana Educator Standards
- Sections

Test Design and Assessment Blueprint

Field 005: Elementary Education

The test design below describes general testing information. The assessment blueprint that follows is a detailed outline that explains the knowledge and skills that this test measures.

Test Design

Format	Computer-based test (CBT)
Number of Questions	100 multiple-choice questions
Time*	105 minutes
Passing Score	220

*Does not include 15-minute CBT tutorial

Assessment Blueprint

Domain	Objectives	Standards	Approximate Test Weight
I Student Development and Diversity	0001	1	10%
II Learning Processes and Environments	0002-0003	2-5	30%
III Instruction and Assessment	0004-0005	3-4	30%
IV The Professional Environment	0006	6	10%

Each objective in the assessment blueprint corresponds to one or more of the REPA Indiana Educator Standards for this field. These standards can be accessed in the PDF below.

On the test? → Already known? → Need to learn? → Do my best!


Candidate Webinar: Test Preparation | 9

On the Test Design and Assessment Blueprint page, you'll notice the number of objectives within each domain and information about the approximate test weighting, or the emphasis given to that domain, on the test. This information illustrates the content coverage you can expect on the test.

This page also provides information about the Test Design:

- Number and type(s) of questions a candidate can expect
- Testing time

How do I know what content is covered?




Assessment Blueprint:


- Describes content measured on each assessment
- Provides information to candidates
- Taken directly from the REPA Standards

**Field 005: Elementary Education
Assessment Blueprint**

Domain I—Student Development and Diversity
0001 Student Development and Diversity (Standard 1)

Domain II—Learning Processes and Environments
0002 Learning Processes (Standard 2)
0003 Learning Environment (Standard 5)





Candidate Webinar: Test Preparation | 10

We'll examine how we can use the blueprint and other resources on the website to study in just a few minutes.

Now, let's look at the organization of an assessment blueprint. The assessment blueprint describes the content measured on each assessment. The blueprint is divided into major content domains. Each domain consists of one or more standard statements or objectives which broadly define different areas of knowledge that a teacher in that field needs to know or be able to do, and a list of essential elements of knowledge that further define the content of that standard/objective.

How do I know what content is covered?



Standard 1: Student Development and Diversity

Elementary education teachers have a broad and comprehensive understanding of student development and diversity and demonstrate the ability to provide instruction that is responsive to student differences and that promotes development and learning for all students, including:

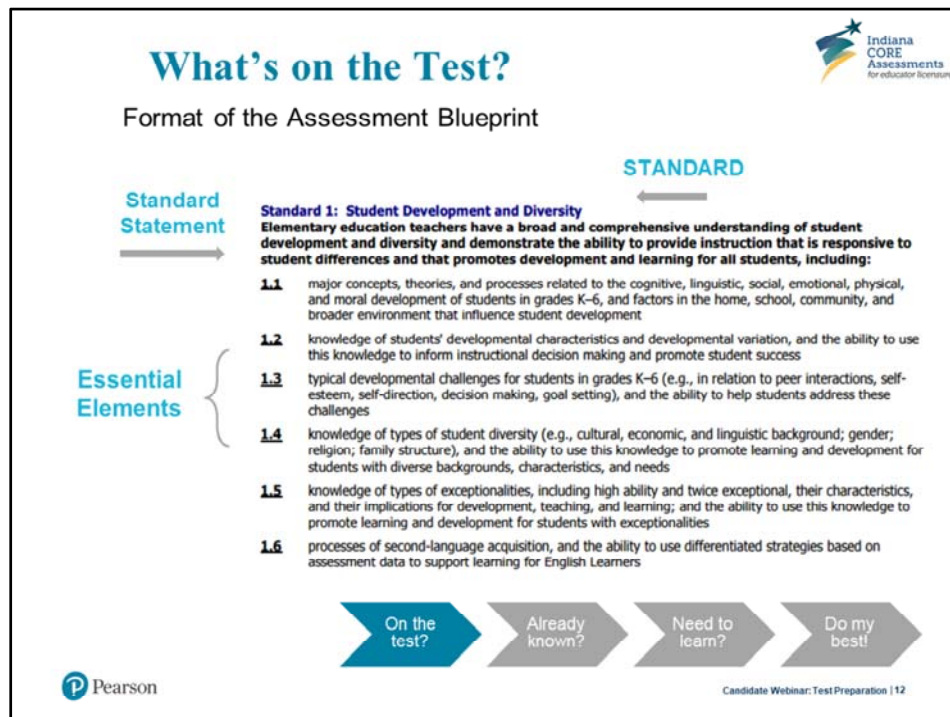
- 1.1** major concepts, theories, and processes related to the cognitive, linguistic, social, emotional, physical, and moral development of students in grades K–6, and factors in the home, school, community, and broader environment that influence student development
- 1.2** knowledge of students' developmental characteristics and developmental variation, and the ability to use this knowledge to inform instructional decision making and promote student success
- 1.3** typical developmental challenges for students in grades K–6 (e.g., in relation to peer interactions, self-esteem, self-direction, decision making, goal setting), and the ability to help students address these challenges
- 1.4** knowledge of types of student diversity (e.g., cultural, economic, and linguistic background; gender; religion; family structure), and the ability to use this knowledge to promote learning and development for students with diverse backgrounds, characteristics, and needs
- 1.5** knowledge of types of exceptionalities, including high ability and twice exceptional, their characteristics, and their implications for development, teaching, and learning; and the ability to use this knowledge to promote learning and development for students with exceptionalities
- 1.6** processes of second-language acquisition, and the ability to use differentiated strategies based on assessment data to support learning for English Learners



Candidate Webinar: Test Preparation | 11

Within each standard or objective is a list of essential elements of knowledge that further define the content of that standard/objective.

Now let's see how we can use the assessment blueprints to get an idea about what we know, what we don't know, and what we should review.



Here's a closer view of the layout of an assessment blueprint.

Notice the standard, the standard statement, and essential elements that are annotated.

You should carefully review the assessment blueprint to understand the knowledge and skills you will be required to demonstrate on the test.

Now that we've seen how the information is organized, let's see how we can use the assessment blueprint to guide our preparation and identify study resources.

What's on the Test?

How well prepared are you?



Carefully review the test blueprint to become familiar with the structure and content of the test. For each objective and list of essential skills, ask yourself:

- Am I fully prepared to answer questions about this subject? ✓
- Is this an area I know something about, but need to review? ?
- Is this content that I am not familiar with at all? ✗



Candidate Webinar: Test Preparation | 13

The assessment blueprint may be used as a guide, by going through lists of essential elements and asking yourself these questions:

- Am I fully prepared to answer questions about this subject?
- Is this an area I know something about, but need to review?
- Is this content that I am not familiar with at all?

What Do I Already Know?



How well prepared are you?

Standard 1: Student Development and Diversity

Elementary education teachers have a broad and comprehensive understanding of student development and diversity and demonstrate the ability to provide instruction that is responsive to student differences and that promotes development and learning for all students, including:

- ✓ **1.1** major concepts, theories, and processes related to the cognitive, linguistic, social, emotional, physical, and moral development of students in grades K–6, and factors in the home, school, community, and broader environment that influence student development
- ✗ **1.2** knowledge of students' developmental characteristics and developmental variation, and the ability to use this knowledge to inform instructional decision making and promote student success
- ? **1.3** typical developmental challenges for students in grades K–6 (e.g., in relation to peer interactions, self-esteem, self-direction, decision making, goal setting), and the ability to help students address these challenges
- ✓ **1.4** knowledge of types of student diversity (e.g., cultural, economic, and linguistic background; gender; religion; family structure), and the ability to use this knowledge to promote learning and development for students with diverse backgrounds, characteristics, and needs
- ✗ **1.5** knowledge of types of exceptionalities, including high ability and twice exceptional, their characteristics, and their implications for development, teaching, and learning; and the ability to use this knowledge to promote learning and development for students with exceptionalities
- ✓ **1.6** processes of second-language acquisition, and the ability to use differentiated strategies based on assessment data to support learning for English Learners



Candidate Webinar: Test Preparation | 14

Here we'll see how this looks by reviewing this example.

Take note of the marks applied to each of the essential elements of the example standard provided, to designate material with which the sample candidate feels confident, content that is in need of review, and content with which the candidate is not familiar at all.

This initial exercise is important as you begin organizing your study plans.

What Do I Need to Learn?



How well prepared are you?

Are there gaps in your content knowledge?

Consider actions to take:

- ✓ **Review with a faculty advisor**
- ✓ **Identify resources**
- ✓ **Take additional courses**



Candidate Webinar: Test Preparation | 15

Another important component for preparing for your test is to identify the sources of information you have for the objectives or standards in the assessment blueprint.

If you do see some gaps in your knowledge, it may be a good idea to schedule some time with an advisor to review this content. They might help you to identify resources, or let you know if additional or new coursework is available to you. If you are not currently part of an educator preparation program, identifying a preparation program in your area and contacting them might be helpful, if you are stuck on a content question.

What Do I Need to Learn?



Identify Resources for further preparation

- ✓ **Textbooks from your university/college courses**
- ✓ **Class notes**
- ✓ **Textbooks being used in Indiana schools**
- ✓ **State and national standards and curriculum documents**
- ✓ **Academic journals**
- ✓ **Publications from national organizations in your field**



Candidate Webinar: Test Preparation | 16


Here is a list of some of the resources that you can reference for content information in the areas you've identified for further study.

What Do I Need to Learn?


Create a study plan and schedule



What I Need to Study	When I'm Going to Study	Status?
Factors affecting a listener's ability to understand spoken language in different contexts	Nov. 1-3	DONE!
Evaluating visual materials for use in an oral presentation	Nov. 4-5	Started
Interpreting messages communicated in news broadcasts, television commercials, and other media	Nov. 7-8	Weekend
Conventions of standard American English	Nov. 9-10	Need to find resources
Strategies for developing reading comprehension	Nov. 17-18	Discuss with study group
Strategies for analyzing written text	Nov. 30-Dec. 2	Schedule meeting with Prof. Alvarez



On the test? → Already known? → **Need to learn?** → Do my best!

 Pearson

Candidate Webinar: Test Preparation | 17

Based on the steps we've described, you can begin to develop a personal study schedule. A study plan is a document with centralized information to help organize your preparation:

- Plan backward from your test date.
- Identify a variety of study strategies (study groups, meetings with a professor or faculty advisor, flash cards, etc.) customized to your studying needs and preferences.
- Try to assemble your study schedule and your resources prior to beginning to study, so that your allocated study time is not spent putting together your study materials.

How Can I Do My Best?
Preparation Materials

Indiana CORE Assessments for educator licensure

Home Tests **Prepare** Register Scores Policies Faculty Resources

Home / Prepare

Preparation Materials

Preparation materials are available for every test. Select a test from the dropdown list to access preparation materials by test, or choose a product from the categories below.

Select a test

Test Content and Sample Questions for All Tests

Study Guides
Review sample questions and general test information.

Assessment Blueprints
Review the content areas covered by the tests.

Practice Tests
Learn more.

Preparation Materials
(005) Elementary Education

Test Content
Assessment blueprint

Study Guide

1. Program and test information
2. Test-taking strategies
3. What's on the test? Test design and assessment blueprint
4. Sample multiple-choice questions

Mapping Assessment
Content to Courses
Taken Worksheet

Videos and Tutorials

Worksheet instructions
PDF worksheet
Microsoft Word worksheet

How to Prepare for Your Teacher Licensure Test
Pearson Professional Centers Tour
Computer-Based Testing Tutorials – Find out what to expect when you take a computer-based test.

Fee-Based Interactive Materials

Practice Test
\$29.95
Includes 120-day access to practice test and review of results, beginning on date of activation. [Learn more](#)

On the test? Already known? Need to learn? **Do my best!**

Pearson

Candidate Webinar: Test Preparation | 18

You should take advantage of the no-cost preparation materials, i.e., the study guides posted for each test. The study guides include sample multiple-choice questions (and, if applicable to your test, a sample constructed-response question).

The study guides may be accessed by clicking on “Prepare” from the home page, and selecting the test you plan to take.

How Can I Do My Best?

Use the Study Guide

Study Guides contain:

- Information about the structure and content of the test
- Assessment blueprint
- Test-Taking Strategies
 - Planning a course of study
 - Suggested study method
 - Strategies for success on the day of the test



Study Guide

Program and Test Information

The Indiana CORE Assessments for Educator Licensure

- is a twenty-first-century program featuring a new generation of technologically advanced and customized assessments;
- will help the Department of Education to assess the quality of candidates for the developmental life schools;
- is the program

Program and Test Info

About the Tests

The tests included in the program are criterion-referenced and standards-based. Criterion-referenced tests are designed to measure a candidate's knowledge and skills in relation to an established standard of performance (a criterion), rather than in relation to the performance of other candidates. The tests are aligned with the REPA Indiana Educator Standards. The program is composed of the following tests:

- Core Academic Skills Assessment: Tests of reading, writing, and mathematics that may be used to satisfy

Study Guide

Test-Taking Strategies

The Indiana CORE Assessments for Educator Licensure, developed and administered by the Evaluation Systems group of Pearson, are fully aligned with the REPA Indiana Educator Standards. Since the REPA Standards are used by Indiana educator preparation programs, the tests are designed to help candidates prepare for the tests.

When you are preparing for a test, you will find the following information helpful:

- understand the structure and content of the tests;
- plan an effective course of study; and
- learn strategies for successful test taking.

For information regarding who must take the Indiana CORE Assessments for Educator Licensure and which tests must be taken, visit "What Tests Do I Need to Take?" on the program website.

Understanding the Structure and Content of the Tests

The skills and knowledge assessed by the tests are described in the assessment blueprint, available on the Indiana CORE Assessments for Educator Licensure website. To view or print the assessment blueprint, click on "Blueprint" and then "Assessment Blueprints," and select your field from the dropdown menu.

Contents


- About the Tests
- Test Development Resources
- Sections

1 2 3 4

Candidate Webinar: Test Preparation | 19

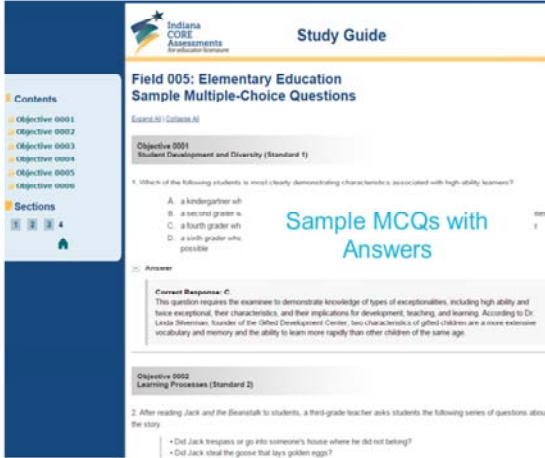
How Can I Do My Best?


Use the Study Guide



Study Guides contain:

- Sample test directions
- Sample multiple-choice questions
- Sample constructed-response assignment (if applicable to your test)





Candidate Webinar: Test Preparation | 20

In addition, the study guides contain sample multiple-choice questions and a rationale/explanation for the correct response.

Once you are familiar with the test objectives and their corresponding standard(s), try to answer the sample test questions for the test you are taking. The sample multiple-choice questions were developed in conjunction with the questions that appear on actual tests and are the best example of the types of questions that you will encounter. After reading a question, you may want to reread the objective and corresponding standard(s) to see how the question is aligned to the objective. This may help you understand what questions associated with particular objectives might look like.

If included in your test, a sample constructed-response assignment is provided, and the study guide also includes a sample strong response, a sample weak response, performance characteristics, and the scoring scale.

How Can I Do My Best?

Use the Full-Length Practice Test

The screenshot displays the Indiana CORE Assessments website. The main navigation bar includes links for Home, Tests, **Prepare** (highlighted with a red box), Register, Scores, and Policies. The 'Prepare' section is active, showing 'Preparation Materials' and a dropdown menu to 'Select a test'. Below this, there are links for 'Study Guides', 'Assessments', and 'Practice Tests' (the latter is highlighted with a red box). A 'Purchase Now' button is visible. A pop-up window titled 'Practice Tests' is overlaid on the right, detailing the benefits of practice tests: convenient online access, a full-length test with sample questions and explanations, and comprehensive feedback. It also mentions that practice tests are available for several fields and provides instructions on how to purchase and access them, including a link to the CASAS website.

Pearson

Candidate Webinar: Test Preparation | 21

Full-length, interactive practice tests are also available for many fields. Interactive practice tests may be purchased from the in.nesinc.com website.

How Can I Do My Best?

Prepare for the Test



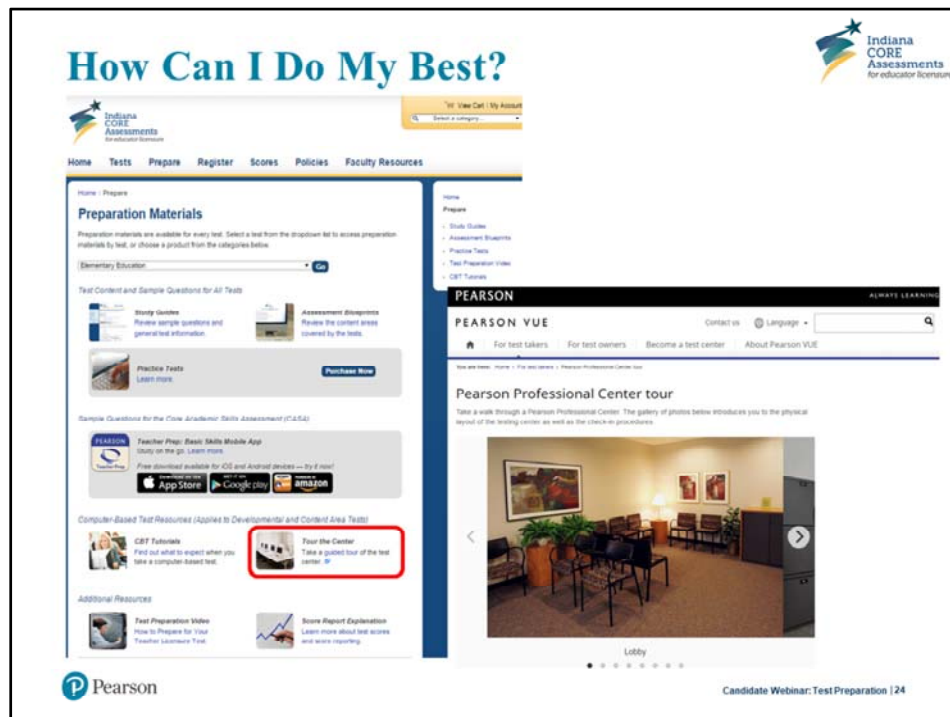
- ✓ Review the preparation materials available on the website.
- ✓ Identify content you need to review or learn.
- ✓ Identify resources (e.g., textbooks, class notes, academic publications).
- ✓ Create a study plan and schedule.
- ✓ Focus on content areas where you do not feel confident, but don't forget to review the content you are most familiar with, too.
- ✓ Be resourceful: Use study aids, or review test material with a faculty member or study groups to maximize what you know and deepen your understanding.
- ✓ Form connections between ideas; don't just memorize!



Candidate Webinar: Test Preparation | 22

To briefly review and synthesize what we've covered so far ...

Questions?



Moving beyond more traditional test preparation resources, the Indiana CORE Assessments for Educator Licensure website has resources that will help you get a better idea of what to expect on the day of the test.

First, you can take a “virtual tour” of a Pearson test center so that you are familiar with the overall look of the general testing environment you can expect when you arrive.

How Can I Do My Best?

Computer-Based Testing

[View Cart](#) | [My Account](#) | [Contact Us](#)

[Home](#) | [Tests](#) | [Prepare](#) | [Register](#) | [Scores](#) | [Policies](#) | [Faculty Resources](#)

[Home](#) | [Prepare](#) | [CBT Tutorials](#)

Computer-Based Testing Tutorials

These tutorials can give you a sense of what you will see when you begin your test at a Pearson Professional Center.

CBT Tutorial

Preview the on-screen tutorial you'll see before you begin your test. Includes information about how to navigate through a test, select your answers, and the test.

- [CBT Tutorial #1](#)

Downloadable Interactive CBT Tutorial

This tutorial demonstrates how to navigate through the test, how to indicate answers, and how to use the features of a computer-based test. You will have opportunities to try out typing in an essay box, using the on-screen calculator, and entering special characters.

Note: This tutorial must be downloaded to a PC-compatible computer.

Downloading the Interactive Tutorial:

1. Right-click on the link below and select "Save link as" (or, in Internet Explorer, "Save Target As"). Select a location to save the file. This is the installation file that will enable you to download and save the tutorial.
2. When the download is complete, navigate to the location where you've chosen to save the file, and double-click on the zip file to open it.
3. Inside the zip file, you will see "Evaluation Systems Tutorial.msi". Double-click to open, and select "Run" in the pop-up dialog box to run the installer.
4. You will now see a "wizard" that will walk you through the process of installing the tutorial.
5. When the wizard is complete, you will see the following icon on your desktop, which you can double-click to access the tutorial!

Interactive CBT Tutorial

- Select your answers
- Type response in an essay box
- Use features of a computer-based test
 - Navigator tool
 - On-screen calculator
 - Entering special characters

Candidate Webinar: Test Preparation | 26

There is also a downloadable, interactive CBT tutorial, where additional features are available. For example, you can practice answering a constructed-response item, see what the on-screen calculator will look like and work with the calculator before the day of the test (if a calculator is included on your test), as well as using other test features such as inserting special characters.

How Can I Do My Best?



Questions to Ask Yourself

- ✓ **Have you reviewed the assessment blueprint?**
- ✓ **Did you identify any objectives or standards statements that represent content areas with which you may be less familiar or not familiar at all?**
- ✓ **Have you mapped the test objectives to the courses you have taken in your educator preparation program?**
- ✓ **Have you completed all or most of the applicable coursework in which the content of this test is taught?**
- ✓ **Have you identified and gathered additional study materials?**
- ✓ **Have you developed a study plan and schedule?**
- ✓ **Have you answered the sample questions in the study guide, checked the correct responses, and reviewed the rationales provided?**
- ✓ **Have you taken a virtual tour of a test center and the computer-based testing tutorial?**



Candidate Webinar: Test Preparation | 27

Here is a brief checklist for you to consider, in terms of getting the most out of the test preparation resources on the Indiana CORE Assessments program website (in.nesinc.com).

How Can I Do My Best?

Taking the Test

Don't forget!

- ✓ Read and follow all directions carefully.
- ✓ Read each question carefully.
- ✓ Determine the best answer to each question.
- ✓ Pace your work.
- ✓ For constructed-response assignments:
 - ✓ Read carefully and respond fully to ALL portions of the assignment.
 - ✓ Make sure that your response meets the performance characteristics described in the test directions and in the preparation materials on the website.

Do Your Best

On the test?

Already known?

Need to learn?

Do my best!

Pearson

Candidate Webinar: Test Preparation | 28

Finally, on the day of the test, be sure to pace yourself and follow directions carefully.

Questions?

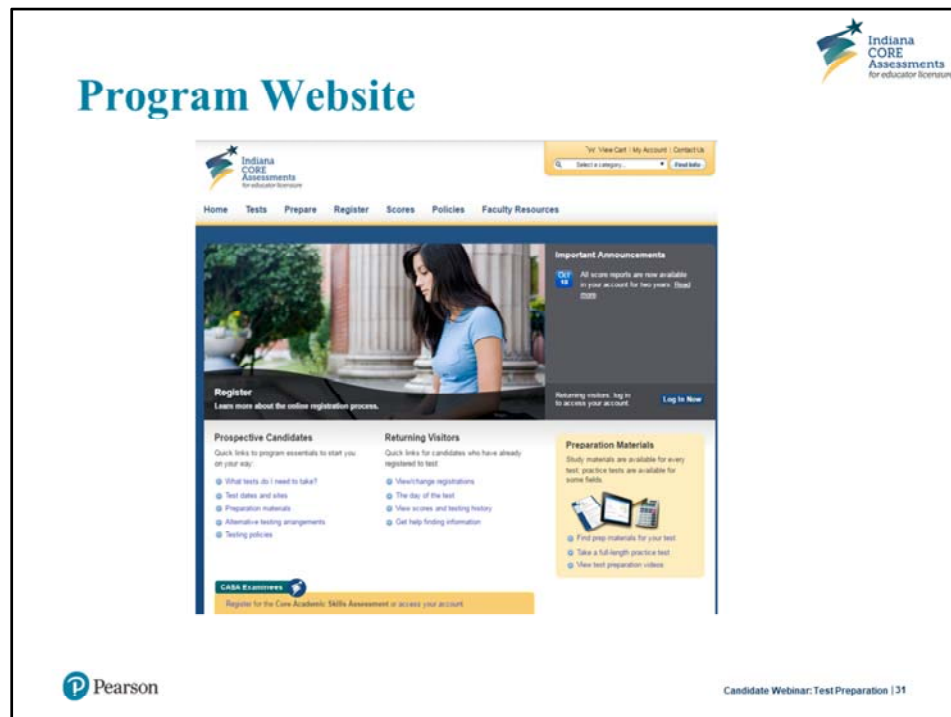


Registering for the Test

- ✓ Create an Account
- ✓ Register for the Test
- ✓ Check Seat Availability

Candidate Webinar: Test Preparation | 30

In this section we will walk through the information you will need to register for your test, and other considerations. We will also review the process for using the website to check seat availability at a test center near you.



First, let's walk through the steps to follow in order to register for a licensure test.

Step 1: Create an Account



Indiana
CORE
Assessments
for educator licensure

Account Information

Please provide the following information to create your account.

Email Address:

Confirm Email:

Password:

Your password must be between 6 and 30 characters and must contain at least one letter and one digit and cannot contain spaces nor any of the characters "!"@~"~>|?";

Confirm Password:

Security Question:

Security Answer:

Your answer to your security question must be between 4 and 120 characters.

[Next](#)


Step 1 of 3

1. Account Information
2. Personal Information
3. Review New Account



Candidate Webinar: Test Preparation | 32

The first step in the registration process involves creating an account. You must provide an email address, create a password, and answer a security question. Notifications regarding your registration and your test results (if you choose to have your scores sent to you via email) will be sent using this email address. We suggest that you use an email address that is not temporary.



Step 1: Create an Account

Please review your personal information.

Email Address: jexaminee@gmail.com

First Name: Joe

Middle Initial: T

Last Name: Examinee

Mailing Address: 123 Main Street

Address Line Two:

City: Anytown

State: Indiana

Zip/Postal Code: 40000

Country: United States

Daytime Phone: 5555555555

Evening Phone: 5555555555

3 Review New Account

Please confirm that the information you have entered is correct.

Warning - An incorrect name could result in:

- an incomplete score report that does not reflect your scores for all of the tests you have taken;
- incomplete information or no information being transmitted to your district and/or your college/university;
- your not being able to access your registration information or scores online.

Failure to provide this information correctly may also delay or jeopardize the issuance of a credential to you.

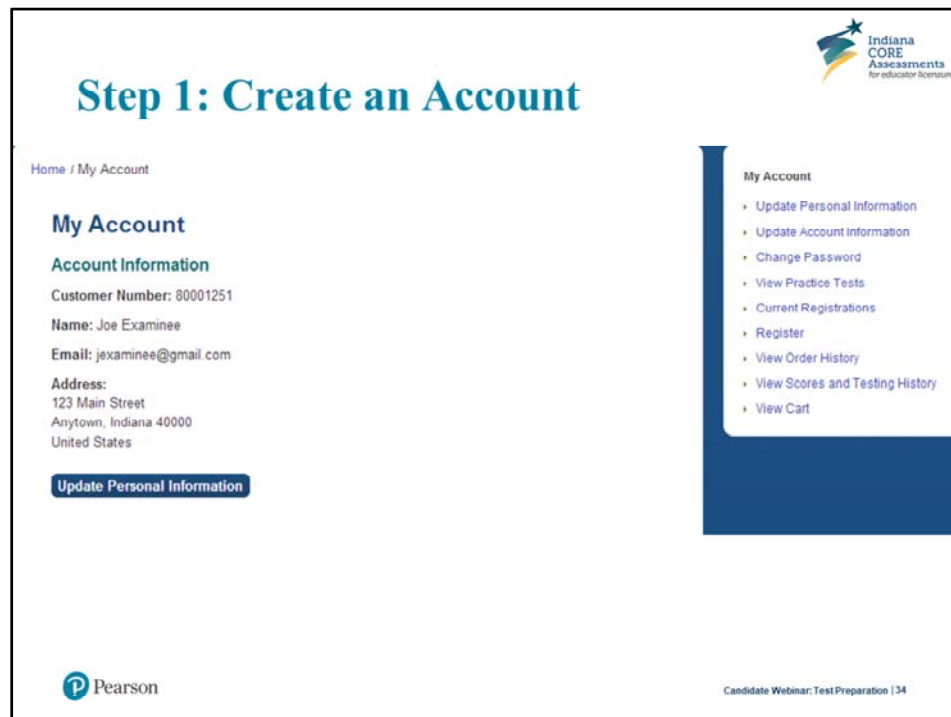
☒ I have reviewed the personal information above and it is correct.

[< Previous](#)
[Submit >](#)



Candidate Webinar: Test Preparation | 33

On a subsequent screen, you will be asked to confirm that the information you entered is correct. You will need to check the box marked “I have reviewed the personal information above and it is correct.” before proceeding.



Once you confirm the personal information and click Submit, your My Account is created. You will access this account to register and pay for tests, purchase practice tests, if desired, and view your score reports and testing history.



At the next screen, you will indicate if you wish to register for the CASA or a CORE (content area or pedagogy) test.

Step 2: Register

Home / Register

Identity Confirmation

Because of laws protecting confidentiality and privacy, only you can register yourself for the test or make inquiries regarding your registration status.

☒ I am the person who will be taking the Indiana CORE Assessments for Educator Licensure.

Next

Indiana
CORE
Assessments
for educator licensure

Step 1 of 6

1. Identity Confirmation

2. Test Selection

3. Update Account For Registration

4. Alternative Testing Arrangements


5. Test Date and Location

6. Review Registration

 Pearson

Candidate Webinar: Test Preparation | 36

At the next screen, you will confirm your identity and acknowledge that you are the person who plans to take the test. Due to laws protecting your confidentiality and privacy, only you can register yourself for the test and make inquiries regarding your registration.



Step 2: Register

[Home](#) / [Register](#)

Test Selection


At a single test administration you may take one test or, for tests with subtests, any allowable combination of subtests.

Test	Options
Select the test or subtest(s) you would like to take. <input style="width: 90%;" type="text"/>	


[Previous](#)
[Next](#)

Step 2 of 6

1. Identity Confirmation
2. **Test Selection**
3. Update Account For Registration
4. Alternative Testing Arrangements
5. Test Date and Location
6. Review Registration


Candidate Webinar: Test Preparation | 37

Once you've confirmed your identity, you will select one or more tests from the dropdown menu. Once you select the test from the dropdown, you will be prompted to answer background questions such as your educational background, the preparation program you attend, your ethnicity, primary language, reason for testing, etc.



Step 2: Register

[Home](#) / [Register](#)


Review Registration

Test(s)	Elementary Education	Change
Alternative Testing Arrangements	No	Change
Background Questions	Scores via Email: Yes, send my score report via email. Ethnicity: White (not of Hispanic origin) Highest Education Level: 3 years of college College Grade Point Average: Decline to answer English Language Proficiency: Yes Reason for Testing: I am currently enrolled in an Indiana educator preparation program. Educator Preparation Training: Indiana University Bloomington Licensure Route: Traditional route via an IDOE-approved preparation program	Change
Score Reporting Options	Additional College or University to Receive Your Results: No Response	Change

[Add to Cart](#)

Step 7 of 7

1. Identity Confirmation
2. Test Selection
3. Alternative Testing Arrangements
4. Test Date and Location
5. Background Questions
6. Score Reporting Options
7. Review Registration



Candidate Webinar: Test Preparation | 38

Once you have completed the background questions, you are given an opportunity to review your registration to confirm your selections, including the test you plan to take. At this point, you may make changes to any information or to the test you’ve selected.

If there are no changes, you will click “Add to Cart” to confirm.

Step 2: Register

Home / My Account / View Cart

View Cart

Description	Actions	Price
Registration	Remove	
Elementary Education		\$114.00
Total:		\$114.00

Available Preparation Materials

IN Elementary Education Practice Test	\$29.95	Add To Cart
---------------------------------------	---------	-----------------------------

[Learn more about preparation materials](#)

[Check Out](#)

My Account

- Update Personal Information
- Update Account Information
- Change Password
- View Practice Tests
- Current Registrations
- Register
- View Order History
- View Scores and Testing History
- View Cart



Indiana
CORE
Assessments
for educator licensure



Pearson

Candidate Webinar: Test Preparation | 39

On this page, you can view the complete registration and fee information before submitting payment. You will also be given the option to purchase fee-based preparation materials (practice tests, for select tests) if you wish.

Once you've finished reviewing the information, you will select "Check Out" to proceed to the purchase screen.

Agreement to the Rules of Test Participation



Agreement

In order to register for a test, you must acknowledge that you have had adequate opportunity to review the rules and policies that apply to Indiana CORE Assessments for Educator Licensure registration and testing and agree to abide by them. These rules and policies are contained on the current program website and in the applicable Rules of Test Participation, which are presented below for your review.

Rules of Test Participation for the Indiana CORE Assessments for Educator Licensure

By registering for the Indiana CORE Assessments for Educator Licensure, you are agreeing to abide by these Rules of Test Participation and all rules and requirements specified or referenced on the current program website and communicated to you, orally and/or in writing, at each test administration for which you have registered.

A nondisclosure agreement will be presented to you on the computer after you sign in at the test center. It will ask you to indicate your agreement to the conditions set forth on the current program website, including the Rules of Test Participation for the Indiana CORE Assessments for Educator Licensure.

☐ I acknowledge that I have had adequate opportunity to review, to my satisfaction, the instructions, rules, policies, and other terms and conditions that apply to Indiana CORE Assessments for Educator Licensure registration and testing, which are contained on the current program website and in the applicable Rules of Test Participation provided above for my review, and I agree to abide by the conditions set forth on the program website, including the Rules of Test Participation, and by the rules communicated to me orally or in writing at the test administration.

Next



Step 1 of 3


1. Agreement
2. Payment
3. Review Order



Candidate Webinar: Test Preparation | 40

The next page includes the rules and policies that apply to registration and testing for the Indiana CORE Assessments for Educator Licensure. Here, you may easily scroll through and review the rules. You must check the box that indicates that you have had a chance to review the policies and procedures. Once you've checked the box and selected "Next," you will be taken to the payment page.

Withdrawal and Refund



Payment

Description	Price
Registration	
Elementary Education	\$114.00
Enter a voucher	
Total:	\$114.00

Withdrawal/Refund Policy

If after registering for a test you wish to withdraw your registration, you may do so according to the following procedure:

If you have not yet scheduled your test: Submit a withdrawal request through your account.


If you have already scheduled your test:

1. First, cancel your test appointment at least 24 hours before your scheduled testing time. To cancel your appointment, log in to your account, click "Reschedule," and follow the instructions provided.
2. After cancelling your test appointment, submit a withdrawal request through your account.

If you withdraw your registration before you have scheduled your test appointment or if you cancel your test appointment at least 24 hours before your scheduled testing time and then withdraw your registration, you will receive a full refund of your test fee. Your refund will be issued by Evaluation Systems within four weeks of your request.

If you are absent from the test, you will not receive a refund or credit of any kind.

☒ I acknowledge that I have had adequate opportunity to review, to my satisfaction, the policies related to withdrawals and refunds stated above.


Pearson

Step 2 of 3

1. Agreement
2. **Payment**
3. Review Order

Candidate Webinar: Test Preparation | 41

This page includes the withdrawal and refund policy. If you have not yet scheduled a test, you may withdraw your registration for a full refund at any time. If you've scheduled your test, you may cancel the test up to 24 hours before the scheduled testing time and will be eligible for a full refund.

You are required to mark that you've had a chance to review the withdrawal and refund policy before proceeding.

Check Real-time Seat Availability

Tests


What tests do I need to take? Testing requirements are dependent on licensure type. [Read more about which tests are required for a teaching license in Indiana.](#)


Information about each test. Get specific information about a test, including when and where you can take the test, and access preparation materials by selecting the test from the following table.



Test Code	Basic Skills Assessment (entry into educator preparation programs)
001/002/003	Core Academic Skills Assessment (CASA)
Test Code	Developmental (Pedagogy) Area Assessments
004	Early Childhood Education
005	Elementary Education
007	P-12 Education

You may check seat availability before or after you register for a test. To check seat availability before you register for a test, select a test and you will be directed to the test landing page.






[Home](#)
[Tests](#)
[Prepare](#)
[Register](#)
[Scores](#)
[Policies](#)
[Faculty Resources](#)

[Home](#) / [Tests](#) / P-12 Education

(007) P-12 Education


Format	Computer-based test; 100 multiple-choice questions
Time	105 minutes
Test Dates	By appointment, year round. Test appointments are available on a first-come, first-served basis. Find a test center and see real-time seat availability
Test Sites	CBT sites are located in Indiana and nationwide. Find a test center and see real-time seat availability


Pearson

Candidate Webinar: Test Preparation | 44

On the test landing page, select “Find a test center and see real-time seat availability.”

Check Real-time Seat Availability





Find Available Times: Select Exam

Find an Exam:

To view available exams, open the group the exam is assigned to by clicking on the group name. Only one group may be opened at a time.


- ▶ Indiana - CORE Assessments for Educator Licensure
- ▶ MEGA - Missouri Educator Gateway Assessments
- ▶ MTLE - Minnesota Teacher Licensure Examinations
- ▶ NMTA - New Mexico Teacher Assessments
- ▶ OHIO - Ohio Assessment for Educators
- ▶ PECT - Pennsylvania Educator Certification Tests




Candidate Webinar: Test Preparation | 45

At the next screen, select “Indiana CORE Assessments for Educator Licensure”

Confirm your test selection and click 'Next.'



Find test centers near you.



Find Available Times: Select Exam

Find an Exam: Go

To view available exams, open the group the exam is assigned to by clicking on the group name. Only one group may be opened at a time.

Indiana - CORE Assessments for Educator Licensure


Exam Code	Exam Name
IN004	Indiana Early Childhood Education
IN005	Indiana Elementary Education
IN006	Indiana Secondary Education
IN007	Indiana P-12 Education
IN008	Indiana Business

Find Available Times: Exam Details

Exam: IN007: Indiana P-12 Education
[View Testing Policies](#)

Language: English


Previous
Next



Candidate Webinar: Test Preparation | 46

On the following screen, confirm your test selection, and click 'Next.'

The next screen will ask you to enter your location, in order to search for test centers near you. Enter the name of your town or city and click 'Search.'

Select a
test center.





Find Available Times: Test Center Search

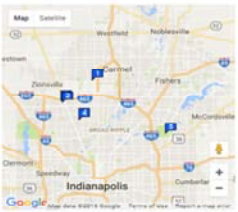
Exam Selection: IN007: Indiana P-12 Education | Language: English Change Exam

Find test centers near: Search
e.g., "3601 Green Valley Drive, Bloomington, MN" or "Paris, France" or "55437"


MILITARY COMMUNITY looking for on-base test centers, please [click here](#)

You can select up to three test centers to compare availability.

Test Center	Distance* from you	Directions
<input type="checkbox"/> New Horizons Computer Learning Center 11611 North Meridian Street Suite 200 Carmel, Indiana 46032 United States	2.6 mi	Get Directions
<input type="checkbox"/> MyComputerCares.com 8509 Purdue Rd Suite 100 Indianapolis, Indiana 46268 United States	6.8 mi	Get Directions
<input type="checkbox"/> Pearson Professional Centers- Indianapolis IN 3000 OakPave Blvd, Bldg 2, Fl 8, Ste 2080 The Pyramids at College Park (Northwest side of Indianapolis) Indianapolis, Indiana 46268 United States	6.8 mi	Get Directions
<input type="checkbox"/> Pearson VUE Test Center Indianapolis IN 9102 North Meridian Street Suite 110 Indianapolis, Indiana 46260 United States	7.2 mi	Get Directions
<input type="checkbox"/> Ivy Tech Community College Ivy Tech Community College - Central IN Fairbanks Center, RM 152 46204-0000, Indianapolis, IN	9.9 mi	Get Directions




[Next](#)



Candidate Webinar: Test Preparation | 47

From the list that is provided, select the test center at which you would like to check seat availability. You may select up to three centers to compare seating availability.



Select a date.

Find Available Times: Choose Appointment

Exam Selection: IN007: Indiana P-12 Education (Language: English) [Change Exam](#)

Please note: You may enter available appointment times now, but before scheduling your appointment you must first register to test at the program website.

Test Center

Pearson Professional Centers
Indianapolis IN
3500 Uniflow Blvd, Ste 2, F1 B, Ste 2000
The Pyramids at College Park
(Northwest side of Indianapolis)
Indianapolis, Indiana 46208
United States

[Change Test Centers](#)

Select Date [Why can't I find an available appointment?](#)

October 2016 November 2016

Su	Mo	Tu	We	Th	Fr	Sa	Su	Mo	Tu	We	Th	Fr	Sa
1	2	3	4	5	6	7	8	9	10	11	12	13	14
15	16	17	18	19	20	21	22	23	24	25	26	27	28
29	30	31					1	2	3	4	5	6	7


Show available appointments on: Select one... Go

Select a date on the calendar to see available appointments.

Appointments displayed are in real time and are not guaranteed to be available until they are booked.

[Previous](#)

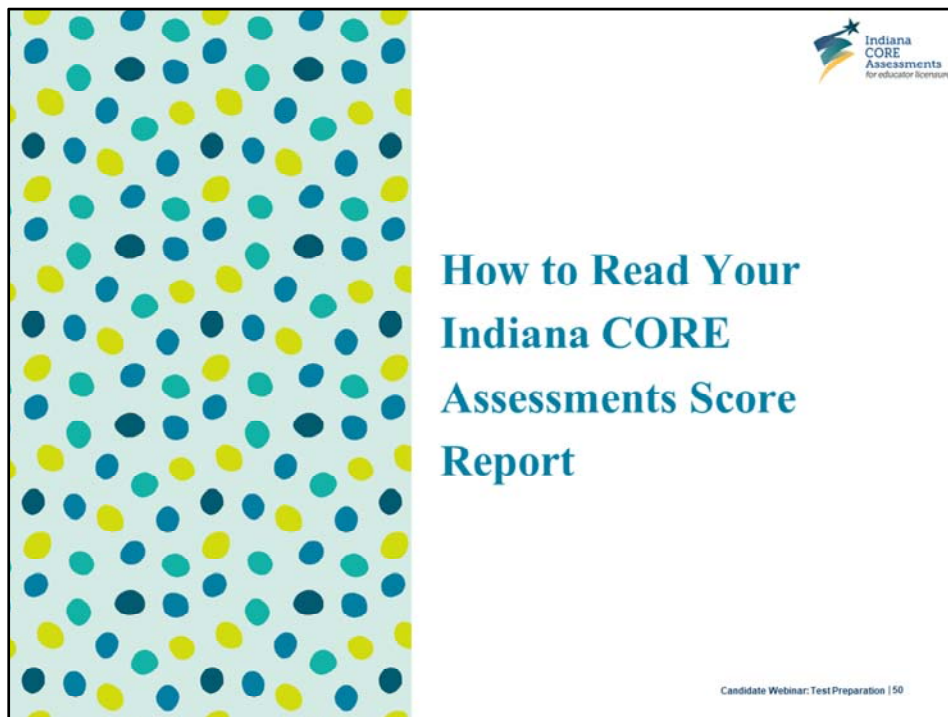
Copyright © 1999-2016 Pearson Education, Inc. or its affiliate(s). All rights reserved. [Terms](#) | [Privacy](#) | [Contact](#)


Candidate Webinar: Test Preparation | 48

The website will then allow you to check seat availability by date.

Please note that seat availability is shown in real time *as of the time that you search*. Seats are not guaranteed to be available until officially scheduled.

Questions?

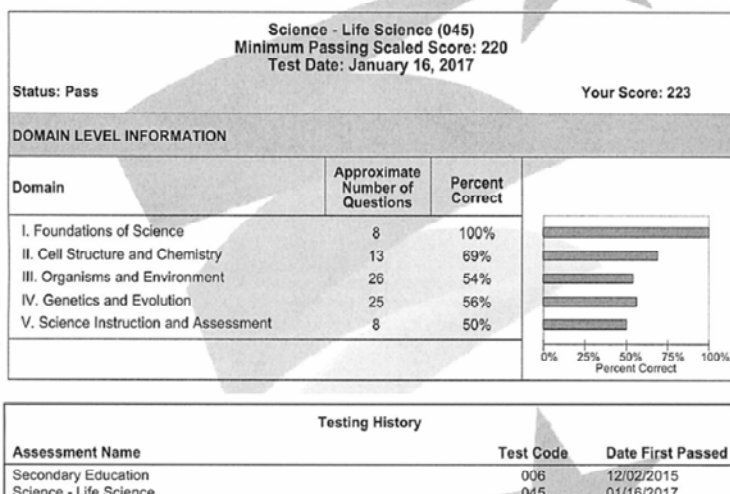


Your score will be available in your account and sent to you by email if you requested this at the time you registered.

For tests with multiple-choice-questions only: Preliminary test results are provided at the test site immediately after testing, and official score reports are released within 10 business days after testing.

For tests with constructed-response assignments: A receipt of completion is provided at the test site immediately after testing, and score reports are released within 20 business days after testing.

How to Read Your Indiana Score Report



Candidate Webinar: Test Preparation | 51

For each test, your performance is evaluated against an established standard. The minimum passing score for each test or subtest is approved by the Indiana State Board of Education (SBOE) and is based, in part, on the professional judgments and recommendations of Indiana educators.

The total test or subtest score is based on the number of raw score points earned on each section (the number of multiple-choice questions answered correctly, and, for some tests, the score(s) for the constructed-response section); the proportion accounted for by each section, if applicable; and the scaling of that score. Raw scores are converted to a scale of 100 to 300. To pass a test or subtest, you must receive a scaled score of 220.

Let's take a look at this sample score report for a candidate who Passed the Science – Life Science assessment. The candidate can see their total test scaled score, the approximate number of questions in each domain, and the percent of those items answered correctly. In this example, the test is comprised of multiple-choice questions only.

How to Read Your Indiana Score Report

HOW TO READ YOUR SCORE REPORT

Overview. This score report provides your test results for the test(s) that you took on the test date(s) listed. The purpose of the Indiana CORE Assessments for Educator Licensure program is to assess the developmental (pedagogical) and content area knowledge of candidates seeking Indiana educator licensure.

Status. "Pass" or "Did Not Pass" status is based on your total score for each test.

If you did not pass a test, your score report will include a Detailed Performance Analysis to help you identify areas for improvement. The Detailed Performance Analysis provides information regarding the number of questions on the test for each objective (standard) and the percentage of those questions that you answered correctly. For tests that include one or more constructed-response assignments, the Detailed Performance Analysis also provides performance information for those assignments.

Your Score. Your score is a scaled score. For each test, the score is based on your performance on all sections of the test and is converted to a scale that ranges from 100 to 300, with a score of 220 representing the passing score for the test. The passing score for each test is established by the Indiana State Board of Education and is based on the professional judgments and recommendations of Indiana educators.

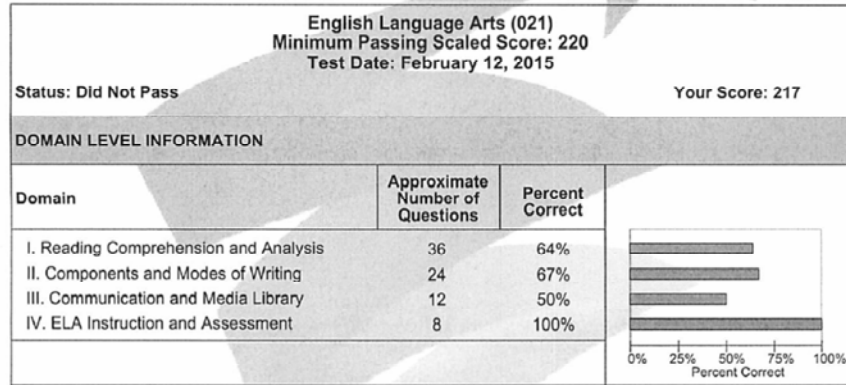
Domain Level Information. This section of your score report contains information regarding your performance on each domain, or major content area, included in the assessment. This information can help you identify areas of relative strengths and weaknesses.

Multiple-choice questions. For multiple-choice sections, you will find the number of questions included in each domain as well as the percentage of these questions that you answered correctly. Please note that each test form includes a small number of questions that do not count toward your score and status; therefore, the sum of the number of questions is less than the number of questions you completed on the test date.

Constructed-response assignments. If your test included one or more constructed-response assignments, you will find the maximum number of score points available for each constructed-response assignment, as well as your score on the assignment. If your response to a constructed-response assignment is designated "Blank" or "Unscorable," you will see one of the following codes.

Included with your test score is a Score Explanation to assist you in understanding the information presented on your score report.

What if I Need to Retake a Test?



Candidate Webinar: Test Preparation | 53

Let's look again at a sample score report, this time for a sample candidate who Did Not Pass an assessment taken. This time we'll review the information on the score report, the information in the Detailed Performance Analysis section (included if a test is not passed), and the test design information, to help focus considerations for preparing to retake the test.

Again, for each of the domains, you will find the number of questions included in the domain as well as the percentage of those questions that you answered correctly. For example, the information displayed here for Domain IV: ELA Instruction and Assessment indicates that the candidate answered correctly 100% of the approximately 8 multiple-choice questions in that domain. Looking at the information for Domain I: Reading Comprehension and Analysis, we see that the candidate answered correctly 64% of approximately 36 questions in that domain.

Now, let's break this down a bit more by looking at the Detailed Performance Analysis and the test design.



[View Cart](#) | [My Account](#) | [Contact Us](#)

[Home](#)
[Tests](#)
[Prepare](#)
[Register](#)
[Scores](#)
[Policies](#)
[Faculty Resources](#)

[Home](#) / [Tests](#) / [English Language Arts](#) / [Preparation Materials](#)

Preparation Materials

(021) English Language Arts

Test Content	Assessment blueprint 
Study Guide	<ol style="list-style-type: none"> 1. Program and test information 2. Test-taking strategies 3. What's on the test? Test design and assessment blueprint 4. Sample multiple-choice questions
Mapping Assessment Content to Courses	Worksheet instructions PDF worksheet
Taken Worksheet	Microsoft Word worksheet
Videos and Tutorials	How to Prepare for Your Teacher Licensure Test Pearson Professional Centers Tour Computer-Based Testing Tutorials – Find out what to expect when you take a computer-based test.

Tests

English Language Arts

- Preparation Materials
- Test Fees and Payment Information
- Requesting Alternative Testing Arrangements
- The Day of the Test
- Policies



Candidate Webinar: Test Preparation | 54

Here we'll refer back to the study guide (select Preparation Materials, and English Language Arts) and view the section "What's on the test? Test design and assessment blueprint" as we reference the detailed performance information on the score report.

Retaking the Test – Test Design (taken from 021 English Language Arts Study Guide)



Domain		Objectives	Standards	Approximate Test Weight
I	Reading Comprehension and Analysis	0001–0003	1–3	45%
II	Components and Modes of Writing	0004–0005	4–5	30%
III	Communication and Media Literacy	0006–0007	6–7	15%
IV	English Language Arts Instruction and Assessment	0008	8	10%

Each objective in the assessment blueprint corresponds to one or more of the REPA Indiana Educator Standards for this field. Those standards can be accessed in the PDF below.



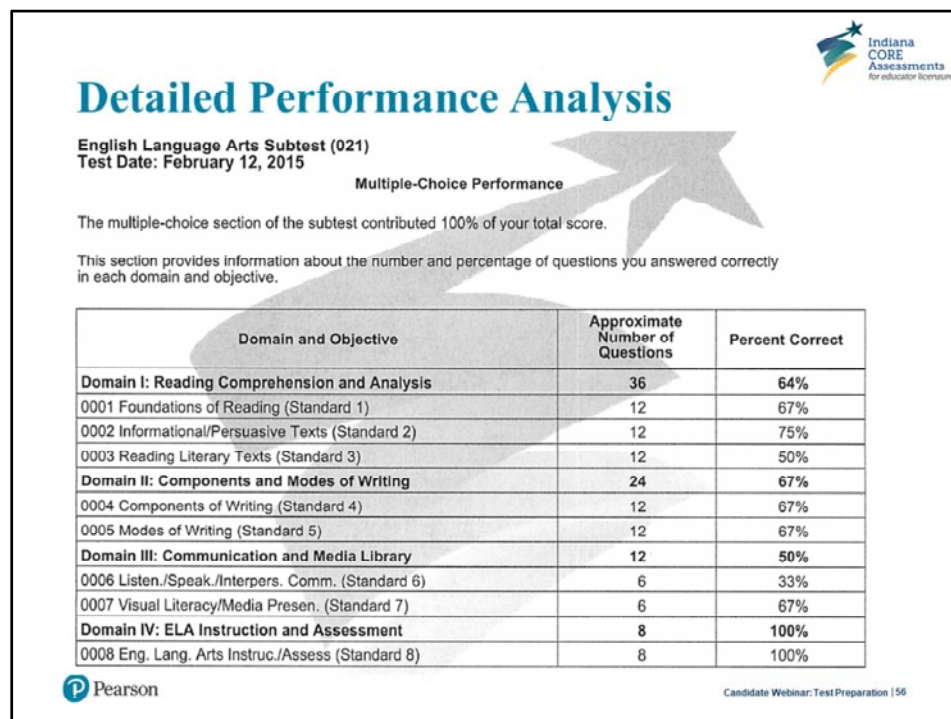
Candidate Webinar: Test Preparation | 55

Here is a close-up of the test design table from the study guide for English Language Arts.

As you will recall from our previous section of this webinar, the test design shows the approximate weighting of the domains and the number of objectives within each domain, and provides an indication of the content coverage on the test.

What we see here is that Domain IV: English Language Arts Instruction and Assessment comprises approximately 10% of the overall content of the test, while Domain I: Reading Comprehension and Analysis comprises about 45% of the overall content of the test.

Next, we'll look at the sample Detailed Performance Analysis to see more detail regarding the sample candidate's performance on the sections of the test.




Now that we have refreshed our understanding about the general content coverage of the test, we can further consider the detailed performance information here. We see that Domain IV contains one objective, and appears to be an area of relative strength for our sample candidate. From the test design we understand that this domain generally comprises a lesser area of content concentration on the assessment.

The Detailed Performance Analysis indicates performance by objective within a domain. For example, in Domain III, the sample candidate can see the difference in their performance on questions in objective 6 and objective 7, for that attempt. In this example, the candidate answered fewer of the questions in objective 6 correctly than those of objective 7. Domain III comprises a smaller amount of content on the assessment overall; however, the information here can be useful to our sample candidate as they prepare to retake the test.

As we recall, areas with greater content coverage on the assessment include Domains I and II. These domains include multiple objectives; therefore, the Detailed Performance Analysis provides a greater level of information about performance within each domain—the breakdown of performance across the objectives.

For example, if we look at the information for Domain I, the approximate number of questions in each objective is the same (12 questions per objective, 36 questions total in that domain), and our sample candidate could use the “percent correct” by objective to help understand better their relative areas of content strength within that domain.

This specific performance information is helpful to target future preparation. Remember, however, that when preparing to retake the test, improvement in any area (domain or objective) of a test that could show improvement can impact your overall test score.




Thank you for your time!

<http://www.in.nesinc.com/Contacts.aspx>


(413) 256-2891 or (800) 215-0904

Available:
Mon–Fri: 9:00 a.m.–8:00 p.m. eastern time
Saturday: 9:00 a.m.–5:00 p.m. eastern time
Excluding holidays

(Automated Information System available 24 hours daily)



Please chat any remaining questions to us along with your email address.



Thank you very much for coming to the Indiana CORE Assessments for Educator Licensure Candidate Webinar! We hope this information is of assistance to you in focusing your preparation for the tests.

If you have any comments about the webinar, we welcome your feedback and will incorporate it on future sessions. If there are any remaining questions, please share them along with your email address so we may follow up with you.

Thank you again for your time today. Have a pleasant afternoon.